

# Survival Equipment

to prevent mountain accidents

## CASES

- Lost due to low visibility in cloudy weather.
- Proceeding without correct direction bearing led to missing.
- Could not go back on course from back country slope.
- Crossing steep slopes after a snowfall triggered avalanche.

### Set up your smartphone while waiting for the ropeway

#### Offline map app

This app can be used without internet.

(Examples)

- ① Install the app Geographica.



Geographica / keiji matsumoto

- ② View the map of Asahidake in Geographica.



- ③ The map is saved automatically when Asahidake is displayed.

#### An app that shows your location and direction

##### iPhone Set up the **compass** app

(Examples)

- ① Settings → Privacy → Location Services "On" → Compass → ALLOW LOCATION ACCESS "while Using the App"
- ② Settings → Compass → Use True North "Off"
- ③ Extras → Compass

##### Android Install **GPS** app

(Examples)

- GPS Status & Toolbox / EclipSim
- GPS Tools ® / VirtualMaze
- GPS DATE (English) / EXA Tools



Spare battery

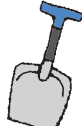
### Carry equipment to save lives!



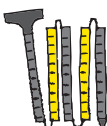
High-calorie foods



Transceiver



Shovel



Probe



Skins



Snowshoes



Winter clothes



Light



Air bag

# Survival Actions

if a mountain accident occurs

See the reverse side for the map.



**CALL 110**

Call "110" or the hotel you're stay to ask for help. Let them know your location. (longitude & latitude)

Make marks with skis and ribbons to find you easily.

Shelter from the snow and wind under a tree or in a hole.

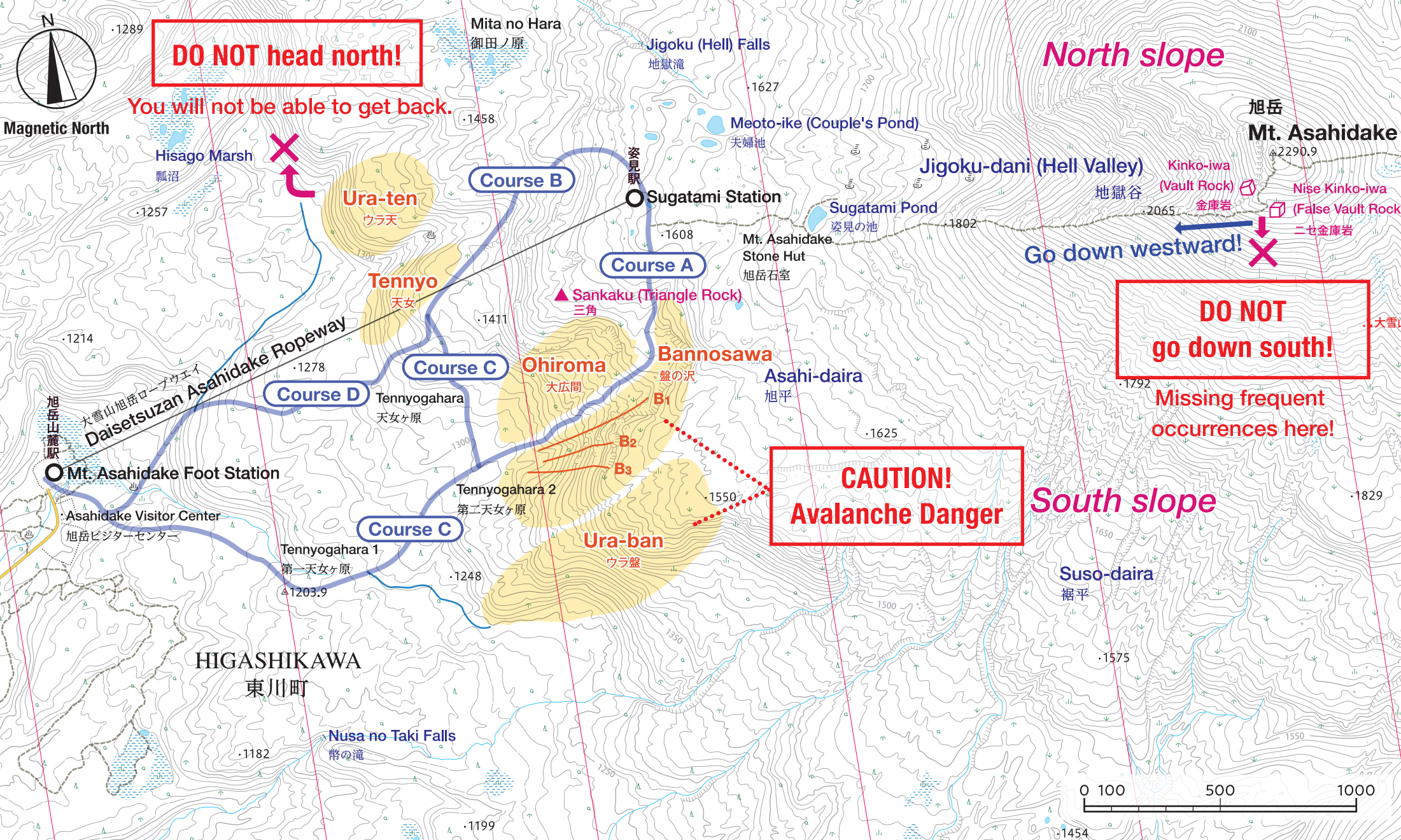
Eat snacks to get calories. This prevents hypothermia.

Keep your mobile warm and save the battery.

Wear all the clothing you have. Be sure to cover your head.

### The rescue team will search for you! Survive without giving up!

- Stay still to save your strength. Build a survival system for at least three days and wait for the rescue team.
- If you cannot make a call, send a text to your family and ask for help.
- Sit on your backpack not on the cold snow.
- If you hear a helicopter, wave your arms or backpack, or flash a light.



# Mt. Asahidake Winter Survival Guide Map

All hikers can greatly improve their skills on Mt.Daisetsuzan.

\*Be sure to bring survival equipment (shown on the reverse side) when you go outside the ski courses.

**EMERGENCY** **Call 110**

「この地図の作成に当たっては、国土地理院長の承認を得て、同院発行の数値地図(国土基本情報)電子国土基本図(地図情報)及び数値地図(国土基本情報)電子国土基本図(地名情報)を使用した。(承認番号 平30情使、第1627号)